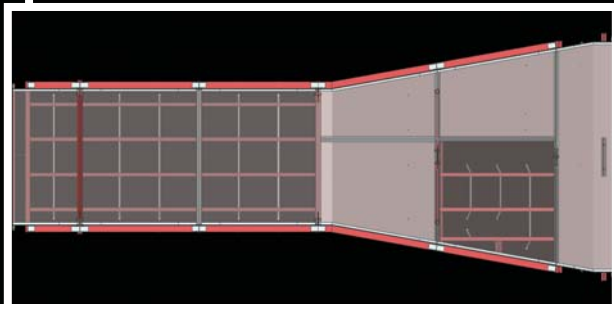
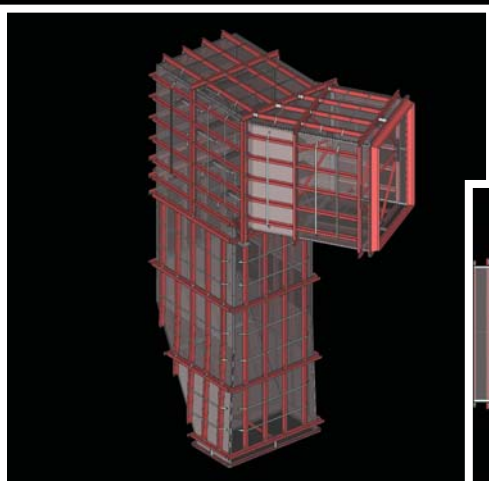
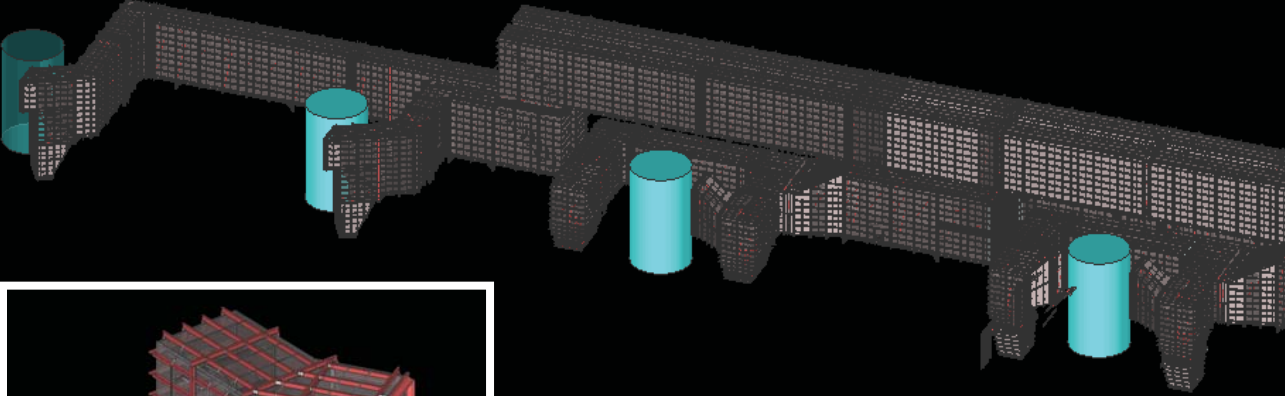
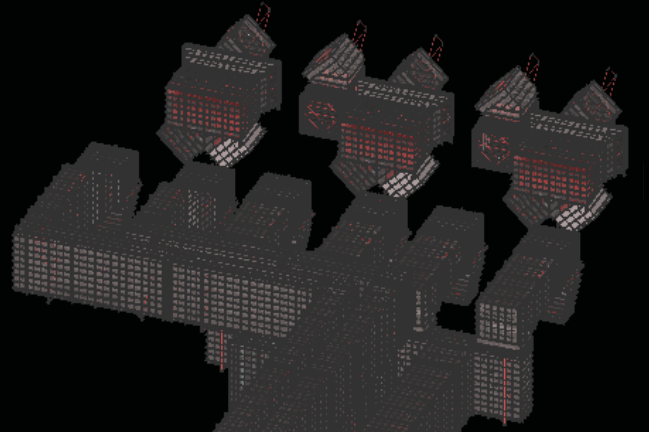
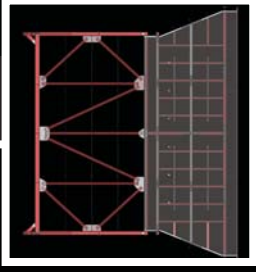


Part of a \$425 million dollar project, Ductwork for Duke Energy's Marshall Steam Station on Lake Norman. The ducts will pipe gases from the plant's boilers to new scrubbers that will cut sulphur dioxide emissions by up to 95%.

One of the world's largest cranes dangled pre-assembled duct sections, weighing hundreds of thousands of pounds, from the end of a structure nearly two football fields long.



Owner: Alstom Power
 Engineer: Shaw Stone & Webster
 Detailer: Innovative Steel Detailing
 Fabricator: Shaw SSS



Duke Energy Ductwork located in Charlotte, North Carolina.

NOVEMBER

sds2.com

Sunday	Monday	Tuesday	Wednesday	Thursday	Friday	Saturday
				1	2	3
4	5	6	7	8	9	10
11	12	13	14	15	16	17
SDS/2 BASIC TRAINING COURSE: NOVEMBER 12 - 16						
18	19	20	21	22	23	24
				DESIGN DATA CLOSED		
25	26	27	28	29	30	

2007